

DIMENSIONS:

Tire Type	Indication	Example
Pneumatic Tire	B-d	600-9
Low Profile Tire	DxB-d	21x8-9
D = Outside diameter		d = Inside (rim) diameter
		B = Maximum width



SPECIFICATIONS

TIRE SIZE	RIM SIZE	TREAD DESIGN	E-Z CLICK	DIMENSIONS (mm)		LOAD CAPACITY (FORKLIFT TRUCK)		WEIGHT (Kgs.)
				WIDTH	DIAMETER	LOAD WHEEL	STEERING WHEEL	
4.00 - 8	2.50C-8	HT	-	102	400	950	730	9.70
	3.00D-8	HT	-	102	400	950	730	9.70
	3.00D-8	S	-	102	400	950	730	9.70
	3.00D-8	HT	✓	102	400	950	730	9.70
	3.75-8	RIB	-	102	400	950	730	11.80
4.00 - 8 Aeroline	3.00D-8	SM	-	102	397	950	730	9.80
	3.00D-8	S	-	102	397	950	730	9.80
	3.00D-8	RIB5	-	102	402	950	730	10.00
	3.75-8	RIB3	-	110	397	950	730	12.00
5.00 - 8	3.00D-8	HT	✓	122	447	1415	1090	15.60
	3.00D-8	SM	✓	122	447	1415	1090	15.60
	3.00D-8	RB	✓	129	456	1415	1090	15.80
	3.75-8	HT	-	122	447	1415	1090	15.60
15 x 4.5 - 8	3.00D-8	HT	✓	115	376	1040	800	9.50
	3.00D-8	RIB	-					
	3.00D-8	SM	✓					
16 x 6 - 8	4.33R-8	HT	✓	150	418	1495	1150	15.30
18 x 7 - 8	4.33R-8	MT	✓	155	451	2145	1650	21.20
	4.33R-8	HT	✓	155	451	2145	1650	20.30
	4.33R-8	RB	✓	152	448	2145	1650	20.50
16 x 5 - 9	3.50-9	RIB	-	120	410	1050	810	11.60
6.00 - 9	4.00E-9	HT	✓	144	518	1885	1450	25.10
	4.00E-9	SM	✓	144	518	1885	1450	25.10
	4.00E-9	RB	✓	142	517	1885	1450	25.80
	4.00E-9	RB-V2	-	142	517	1885	1450	24.50
140/55 - 9	4.00-9	HT	✓	170	348	1170	900	10.30
21 x 8 - 9	6.00E-9	HT	✓	180	524	2755	2120	33.20
	6.00E-9	RB	✓	179.2	518.95	2755	2120	32.60
200/50 - 10	6.50F-10	MT	✓	195.25	455	2470	1900	24.60
	6.50F-10	HT	✓	195	455	2470	1900	23.80
650 - 10	5.00F-10	HT	✓	168	572	2340	1800	36.70
	5.00F-10	SM	✓	168	572	2340	1800	36.70
	5.00F-10	RB	✓	155	573	2340	1800	32.80
23 x 9 - 10	6.50F-10	HT	✓	231	576	3770	2900	47.00
7.00 - 12	5.00S-12	HT	✓	177	642	2920	2240	45.70
	5.00S-12	SM	-	188	650	2920	2240	46.00
	5.00S-12	RB	-	168	643	2920	2240	45.00
	5.00S-12	RB-V2	-	168	643	2920	2240	41.40
27 x 10 - 12	8.00G-12	HT	✓	235	670	3900	3000	70.50
5.50 - 15	4.50E-15	S	-	152	645			35.30
7.00 - 15	5.50-15	HT	✓	176	720	3545	2725	59.40
	6.00-15	HT	✓	176	720	3545	2725	59.40
7.50 - 15	6.00-15	HT	-	206	745	3900	3000	69.50
	6.50-15	HT	-	206	745	3900	3000	69.50
28 x 9 - 15	6.50-15	HT	✓	221	694	3900	3000	61.30
[8.15 - 15]	6.50-15	SM	✓	221	694	3900	3000	61.30
	6.50-15	RB	✓	200	695	3900	3000	58.00
	6.50-15	RB-V2	-	200	695	3900	3000	53.10
	7.00-15	HT	✓	221	694	3900	3000	61.30
	7.00-15	SM	✓	221	694	3900	3000	61.30
	7.00-15	RB	✓	200	695	3900	3000	58.00
	7.00-15	RB-V2	-	200	695	3900	3000	53.10
28 x 12.5 - 15	7.00-15	HT	✓	292	694	5040	3875	81.30
[355/45 - 15]	8.25 - 15							
	6.50-15	HT	✓	212	794	4750	3650	58.20
	6.50-15	RB	✓	199	795	4750	3650	75.70
	7.00-15	HT	✓	212	794	4750	3650	58.20
250 - 15	7.00-15	HT	✓	240	714	4750	3650	70.20
	7.00-15	RB	✓	225	720	4750	3650	66.40
	7.50-15	HT	✓	240	714	4750	3650	70.60
	7.50-15	RB	✓	225	720	4750	3650	66.40
300 - 15	8.00-15	HT	✓	252	808	5850	4500	104.40
	8.00-15	RB	✓	250	815	5850	4500	100.20
355/65 - 15	9.75-15	HT	✓	300	808	7800	6000	128.60
7.50 - 16	5.50-16	HT	-	206	760	3950	3050	70.60
	6.00-16	HT	-	206	766	3950	3050	70.60
8.25 - 20	6.50-20	HT	-	231	925	4400	3675	110.20
	7.00-20	HT	-	231	925	4400	3675	110.20
9.00 - 20	6.50-20	HT	-	243	935	5340	4450	121.80
	7.00-20	HT	-	243	935	5340	4450	121.80
	7.00-20	SM	-	243	935	5340	4450	121.80
10.00 - 20	6.50-20	HT	-	253	982	6000	5000	136.40
	7.00-20	HT	-	253	982	6000	5000	136.40
	7.50-20	HT	-	253	982	6000	5000	144.90
	7.50-20	SM	-	253	982	6000	5000	144.90
	8.00-20	HT	-	253	982	6000	5000	144.90
11.00 - 20	7.50-20	HT	-	257	1033	6510	5425	170.90
	7.50-20	SM	-	257	1033	6510	5425	170.90
	8.00-20	HT	-	257	1033	6510	5425	170.90
12.00 - 20	8.00-20	HT	-	270	1059	7500	6250	221.30
	8.50-20	HT	✓	270	1059	7500	6250	221.30
	10.0-20	HT	-	308	1059	7500	6250	221.30
12.00 - 24	8.00-24	HT	-	300	1168	7980	6650	241.10
	8.50-24	HT	-	300	1168	7980	6650	241.10
14.00 - 24	10.00-24	HT	-	335	1300	11000	9175	342.60

ALL-ROUND SOLUTIONS FOR YOUR INDUSTRIAL TIRE NEEDS

Excellent comfort with unbeatable performance

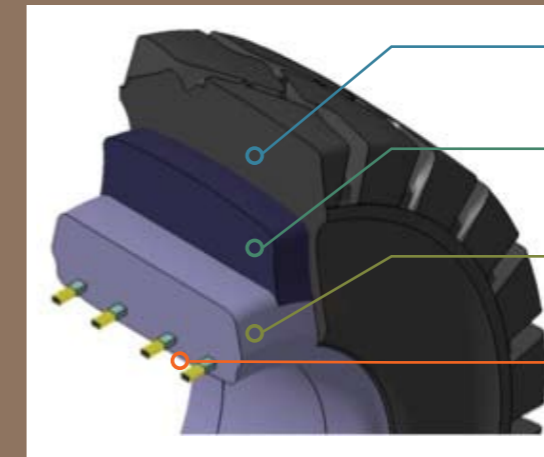


WHY TOKAI SOLID TIRE ?

- Outstanding performance
- High wear resistance
- Low heat build-up
- Excellence grip traction
- Maximum safety



THREE-LAYER COMPOUND



- Wear Resistant Tread Compound**
Formulated with premium NR for maximum abrasive strength, tear resistance and wear durability.
- Cushion Compound**
Formulated with premium NR to provide optimal shock absorption and low heat build-up over long distances.
- Base Compound**
A specially designed high tensile compound provides maximum hardness, exceptional stability and low deflection.
- Bead Wire**
Enhanced reinforcement and gripping of tire to the rim, for increased safety and stability.



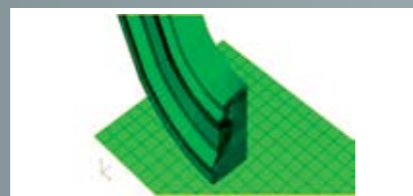
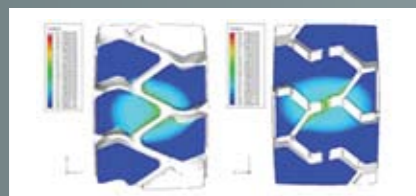
ALL-ROUND SOLUTIONS FOR YOUR INDUSTRIAL TIRE NEEDS

TOKAI's product range was designed to deliver optimal performance, energy efficiency, comfort, durability and safety.

TOKAI is renowned for its dedication to quality and diverse product line.

ADVANCE TECHNOLOGY

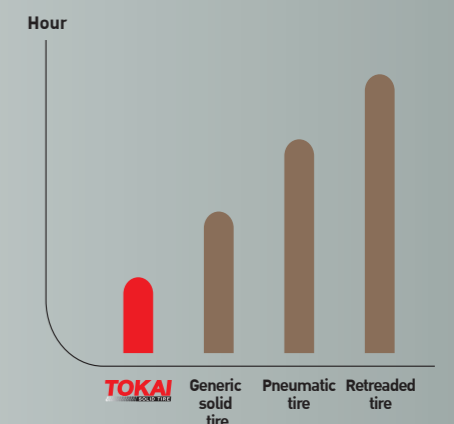
TOKAI invests heavily in its research and development, using cutting-edge computer technology and over 15 years of acquired knowledge to develop new products. We use a finite element analysis (FEA) technique to study each tire's internal deformation under load, at variable speeds and during various working conditions.



COMPOUNDS

- Normal - premium natural rubber compound designed for optimum wear on diesel trucks
- Non-marking - available in white, extreme white and green
- Energy Max - for better energy efficiency on electric trucks
- Other special compounds available upon request

COST PER USE



TOKAI SOLID TIRE

PRESS ON



MOULD MATE CO.,LTD.

TOKAI SOLID TIRE

SPECIFICATION PRESS ON BAND

SMOOTH



TREAD



NON MARKING



CROWN



Tire Size			Tread Design				Load Capacity				Other Vehicle	Weight	
In Inch	Rim	In Metric	Standard		Crown		Up to 10 km/h		Up to 16 km/h		16 km/h	Kgs.	Lbs.
Dxbxf		Dxb-d	Smooth	Tread	Smooth	Tread	Load Wheel	Steer Wheel	Load Wheel	Steer Wheel			
8 1/2x4x4	4	216x102-102			•		700	575	625	525	500	6.0	13.2
9x5x5	5	229x127-127			•		965	795	855	715	690	10.0	22.0
10x3x6 1/4	6 1/4	254x76-159	•	•								4.5	9.9
10x4x6 1/4		254x102-159	•	•			780	640	695	585	555	6.1	13.4
10x5x6 1/4		254x127-159	•	•			1030	840	915	770	730	7.7	16.9
10x6x6 1/4		254x152-159	•	•			1270	1040	1135	950	910	9.4	20.7
10x4x6 1/2		254x102-165	•	•			780	640	695	585	555	7.0	15.4
10x4 3/4x6 1/2	6 1/2	254x120-165	•	•			950	780	845	710	680	7.8	17.2
10x5x6 1/2		254x127-165	•	•	•	•	1015	835	905	725	725	8.0	17.6
10 1/2x5x6 1/2		267x127-165	•	•			107	885	960	810	770	10.5	23.1
10 1/2x6x6 1/2		267x152-165	•	•			1335	1095	1190	1000	955	12.2	26.8
10 1/2x7x6 1/2		267x178-165	•	•			1600	1310	1430	1200	1140	12.0	26.4
10x4x7 1/4	7 1/4	254x102-184.2			•								
12x4x8	8	305x102-203.2	•	•			905	740	810	680	645	6.3	13.9
12x4 1/2x8		305x114-203.2	•	•			1040	885	925	780	745	9.2	20.2
12x5 1/2x8		305x140-203.2	•	•	•	•	1275	1050	1110			10.1	22.2
13x3 1/2x8		330x89-203.2	•	•			785	645	705	590	620	6.2	13.6
13x4 1/2x8		330x114-203.2	•	•			1120	920	1000	840	800	8.4	18.5
13x5x8		330x127-203.2	•	•			1290	1060	1150	965	920	11.8	26.0
13 1/2x4 1/2x8		343x114-203.2	•	•			1145	940	1020	860	820	11.0	24.2
13 1/2x5 1/2x8		343x140-203.2	•	•	•	•	1510	1240	1345	1130	1080	11.5	25.3
14x4 1/2x8		356x114-203.2	•	•	•	•	1165	955	1040	875	830	12.3	27.1
14x5x8		356x127-203.2	•	•			1360	1120	1215	1020	970	13.9	30.6
13x3 1/2x10	10	330x89-254.0	•									7.9	17.4
13x5x10		330x127-254.0	•				1250	1025	1115	935	890	13.0	28.6
14x5x10		356x127-254.0	•	•			1335	1100	1200	1000	950	9.9	21.8
14x5 1/2x10		356x140-254.0	•	•								15.7	34.5
15 1/2x5x10		394x127-254.0	•	•	•	•	1470	1210	1315	1100	1050	15.5	34.1
15 1/2x6x10	394x152-254.0	•	•			1870	1530	1665	1400	1330	18.7	41.1	
16x5x10 1/2	10 1/2	406x127-266.7	•	•	•	•	1505	1240	1345	1130	1075	17.2	37.8
16x6x10 1/2		406x152-266.7	•	•	•	•	1905	1565	1700	1430	1360	20.2	44.4
16x7x10 1/2		406x178-266.7	•	•			2325	1910	2070	1740	1660	22.5	49.5
15x3x11 1/4	11 1/4	381x75-285.8	•	•								8.5	18.7
15x3 1/2x11 1/4		381x89-285.8	•	•			885	730	800	670	640	10.2	22.4
15x5x11 1/4		381x127-285.8	•	•			1390	1145	1240	1045	99	14.0	30.8
15x6x11 1/4		381x152-285.8	•	•			1715	1410	1530	1285	1225	16.8	37.0
15x8x11 1/4		381x203-285.8	•	•			2385	1960	2130	1790	1700	22.4	49.3
16 1/4x5x11 1/4		413x127-285.8	•	•	•	•	1525	1250	1360	1145	1090	16.5	36.3
16 1/4x6x11 1/4		413x152-285.8	•	•			1915	1570	1710	1435	1365	19.9	43.8
16 1/4x7x11 1/4	413x178-285.8	•	•			1325	1900	2060	1735	1650	23.0	50.6	
16x3 1/2x12 1/8	12 1/8	406x89-308	•	•			940	770	840	705	640	11.5	25.3
17x5x12 1/8		432x127-308	•	•			1570	1290	1400	1180	1120	15.0	33.0
17x6x12 1/8		432x152-308	•	•			1980	1630	1770	1485	1410	20.0	44.0
18x5x12 1/8		457x127-308	•	•	•	•	1640	1350	1465	1230	1175	19.7	43.3
18x6x12 1/8		457x152-308	•	•	•	•	2090	1715	1865	1565	1490	24.0	52.8
18x7x12 1/8		457x178-308	•	•	•	•	2555	2100	2280	1915	1825	28.5	62.7
18x8x12 1/8		547x203-308	•	•	•	•	3000	2465	2680	2250	2145	33.2	73.0
18x9x12 1/8	457x229-308	•	•			3465	2845	3095	2600	2475	36.3	79.9	
21x6x15	15	533x152-381	•	•			2350	1930	2100	1765	1680	28.0	61.6
21x7x15		533x178-381	•	•	•	•	2870	2360	2565	2155	2050	32.5	71.5
21x8x15		533x203-381	•	•			335	277	3015	2530	2410	36.5	80.3
21x9x15		533x229-381	•	•			3900	3250	3465	2965	2785	40.5	89.1
22x6x16	16	559x152-406.4	•	•			2430	1995	2170	1825	1735	28.5	62.7
22x7x16		559x178-406.4	•	•			2975	2450	2650	2230	2125	35.0	77.0
22x8x16		559x203-406.4	•	•	•	•	3500	2875	3125	3125	2500	40.0	88.0
22x9x16		559x229-406.4	•	•			4045	3325	3615	3035	2890	47.5	104.5
22x10x16		559x254-406.4	•	•			4575	3750	4080	3425	3250	52.0	114.4
22x12x16		559x305-406.4	•	•			5640	4635	5035	4230	4030	60.0	132.0
22x14x16		559x356-406.4	•	•			6415	5510	5995	5035	4795	66.0	145.2
28x12x22	22	711x305-559	•	•			6750	5545	6025	5060	4820	81.0	178.2
28x14x22		711x356-559	•	•	•	•	8030	6595	7170	6020	5735	98.0	215.6
		315x145-180			•							12.3	27.06
		380x140-265			•						14.9	32.78	

Distributor :



MOULD MATE CO.,LTD.

5/5 SOI AREE 5 PHAHOLYOTHIN RD.
SAMSENNAI PHAYATHAI, BANGKOK 10400 THAILAND
TEL. (662) 270-0291-2 FAX. (662) 270-0290
<http://www.mouldmate.com> E-mail: info@mouldmate.com

MOULD MATE CO.,LTD.



New

**SOLID DURABILITY,
NO PUNCTURES AND ZERO MAINTENANCE**

TOKAI SKID STEERS



- Floatation tread design; good self-cleaning and maximum traction
- Special compound for heavy duty application
- Ideal used in soft wet soil conditions, snow, or deep mud

D-TRAC

ALL-TRAC

- Good traction and wider foot print for better contact area
- Deeper tread design for high performance and longer life
- Ideal used on asphalt, and concrete surfaces



SMOOTH

- High performance
- More consistently under load condition, and low noise
- Ideal used for extreme loads applications on smooth surface



- Strength and stability even in the rough terrain
- Smooth cushioned ride
- Shock absorbent
- Ideal used in snow, sand, or deep mud

New



MONSTER SERIES

TIRE SIZE	RIM SIZE	OVERALL DIAMETER	SECTION WIDTH	TREAD WIDTH	TREAD DEPTH	MAX LOAD (16 mph) (LBS)
D-TRAC						
31 x 10-20	7.5	31"	10"	9"	1.5"	6600
33 x 10.75-20	7.5	33"	10" 3/4	10" 5/32	1"	8800
ALL-TRAC						
30 x 10-20	7.5	30"	10"	9" 7/16	1.5"	6600
33 x 10.75-20	7.5	33"	10" 3/4	10" 5/32	1.5"	8800
SMOOTH						
30 x 10-20	7.5	30"	10"	-	-	6600
33 x 10.75-20	7.5	33"	10" 3/4	-	-	8800
MONSTER SERIES						
30 x 10-16 New	6.0	30"	9.6"	2.6"	1.5"	6600
33 x 10-18	7.5	33"	9.6"	2.7"	1.5"	8800

Replaces the 10x16.5 Skidsteer Tires

- 30x10-20 Tire and Wheel Assembly
- 31x10-20 Tire and Wheel Assembly
- 31x10-16 Tire and Wheel Assembly

Replaces the 12x16.5 Skidsteer Tires

- 33x10.75-20 Tire and Wheel Assembly
- 33x10.18 Tire and Wheel Assembly



5/5 SOI AREE 5 PHAHOLYOTHIN RD.
SAMSENNAI PHAYATHAI, BANGKOK 10400 THAILAND
TEL. (662) 270-0291-2 FAX. (662) 270-0290
<http://www.mouldmate.com> E-mail: info@mouldmate.com

Distributor:



TOKAI

SOLID TIRE

- Zero maintenance
- Increase productivity
- Minimum downtime
- Up to 3-5 times longer life than traditional bias ply or radial tires



13.00-24

14.00-24

16.00-25

Tire / wheel assembly

Buy the Best and Save!

Tokai solid tire is a preferred product for material handling machines, telehandlers and wheel loaders. With a longer service life compared to ordinary pneumatic tires, it will help keep your operational costs down. It also enhances machine stability and load capacity.



13.00-24



14.00-24



16.00-25

Tyre Size	Rim Size	Tyre Dimensions				Load Capacity
		Overall Diameter	Section Width	Tread Width	Weight (LBS)	Max Load (16 mph) (LBS)
13.00-24	8.50"	50"	13"	12"	655.60	13200.00
14.00-24	8.50"	52"	14"	12.26"	726.42	24250.85
16.00-25	11.25"	57"	16"	15.43"	1217.61	40785.52

MOULD MATE CO., LTD.

Office : 5/5 Soi Aree 5 Phaholyothin Rd., Samsennai,
Phayathai Bangkok 10400 THAILAND

Tel : (662) 2700291-2 Fax : (662) 270-0290

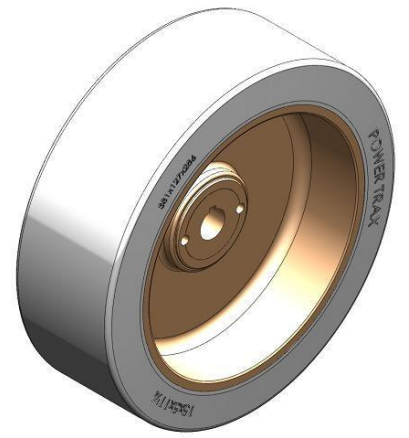
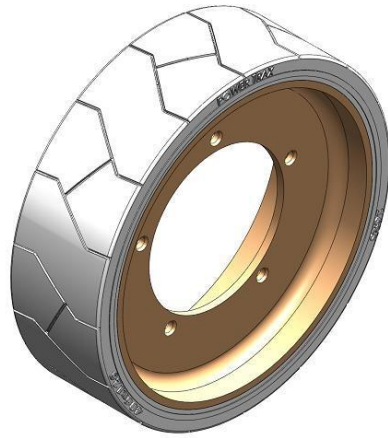
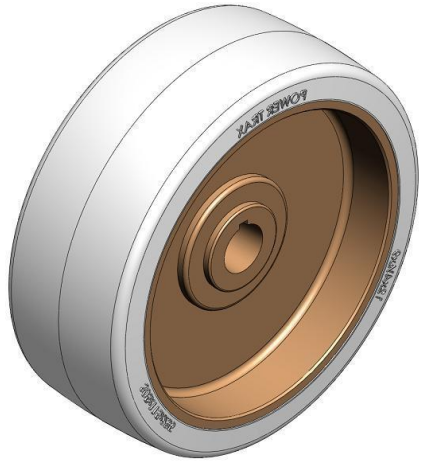
Factory : 169 Moo 4 Rung-Rang, Sao-Hai Saraburi 18160 THAILAND

Tel : (6636) 281300-1, 338-945 Fax : (6636) 281-302

E-mail : info@mouldmate.com <http://www.mouldmate.com>



ARIAL WHEEL



AW1

305x115x235

AW2

406x125

AW3

381x127x286

Tyre Size	Rim Size	Overall Diameter	Section Width(mm)	Pattern	Weight (LBS)	Max Load (LBS)
305x115x 235	AW1	305	115	SM, TR	30.93	1122.00
406x125	AW2	406	125	TR	39.01	n/a
381x127x286	AW3	381	117	SM, TR	51.04	2224.00